



KANNE & JOOS

GROUP

Do business with the sun

Expose PV-Project Timis 2

General Information

Project Name:	TIMIS 2
SPV Name:	LL Solar SRL
District:	Liebling Romania
Coordinates:	45°33'6.05"N, 21°22'25.50"E

Site Information

Lot Size:	122,85ha
Power:	max 125MWp with system fix direction south + 100MW battery with capacity of 400MWh
Type of surface:	agriculture land outside from the town
Inclination:	completely flat
Access road:	some plots asphalt road some plots dirt road
Horizontal Global Radiation:	1.365-1.374kWh/m ²
Condition Connection:	Connection will be in 2029 in 400kV-line. Currently, the existing 220 kV line is being increased to 400 kV. The distance to the connection point will be from 1,3 until 4km between the different plots. By the connection point we have to build a 33/400kV substation. The connection point selves will be shared between 3 projects and is owned by Transelectrica.
Condition's land:	Superficie contract 1.000€/a for the complete area until ready to build maximal until 2029. After construction, 5% from the turnover at least 2.500€/ha/a for 30years + 5 years option
Timeline of development:	<p>The planning certificates are received. In the moment we are in the process to reserve the connection point (ATR)</p> <p>We expect the ATR in Q3-Q4 2025.</p> <p>We expect the building permits for pv-parc in Q2 2026</p> <p>We expect the connection contract (contract de racordare) in Q2 2026</p> <p>We expect building permits for connection and cable route in Q4 2026</p> <p>We expect connection of the PV-parc in 2028 - 2029</p>
Price of the project:	60.000€/MWp DC + optional 5.000€/MWh storage capacity per share deal
Payment condition:	20% by confirmation connection point, 20% by building permits PV-parc, 60% by building permits connection point

Pictures Project

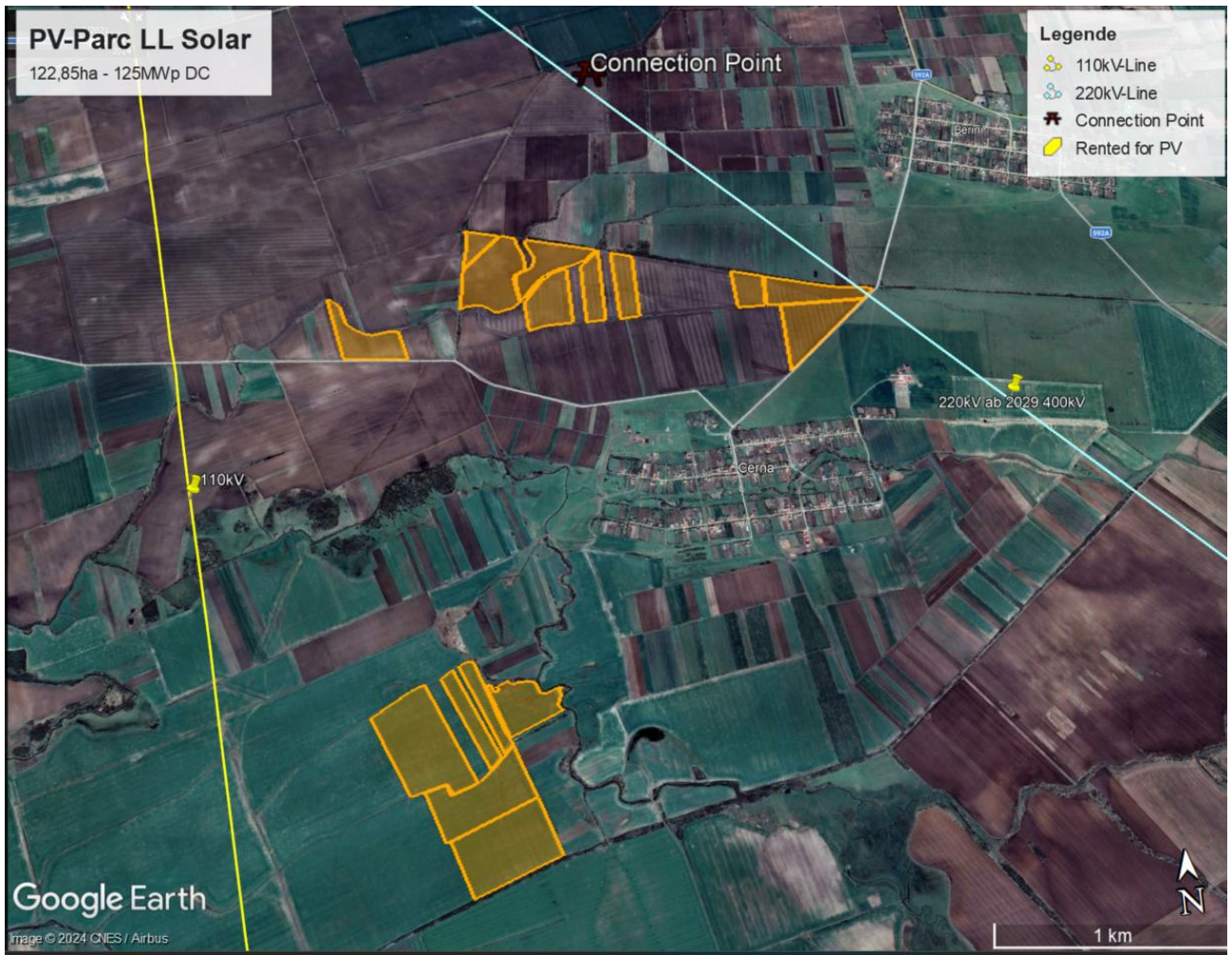


Photo 1: Overview PV-Project

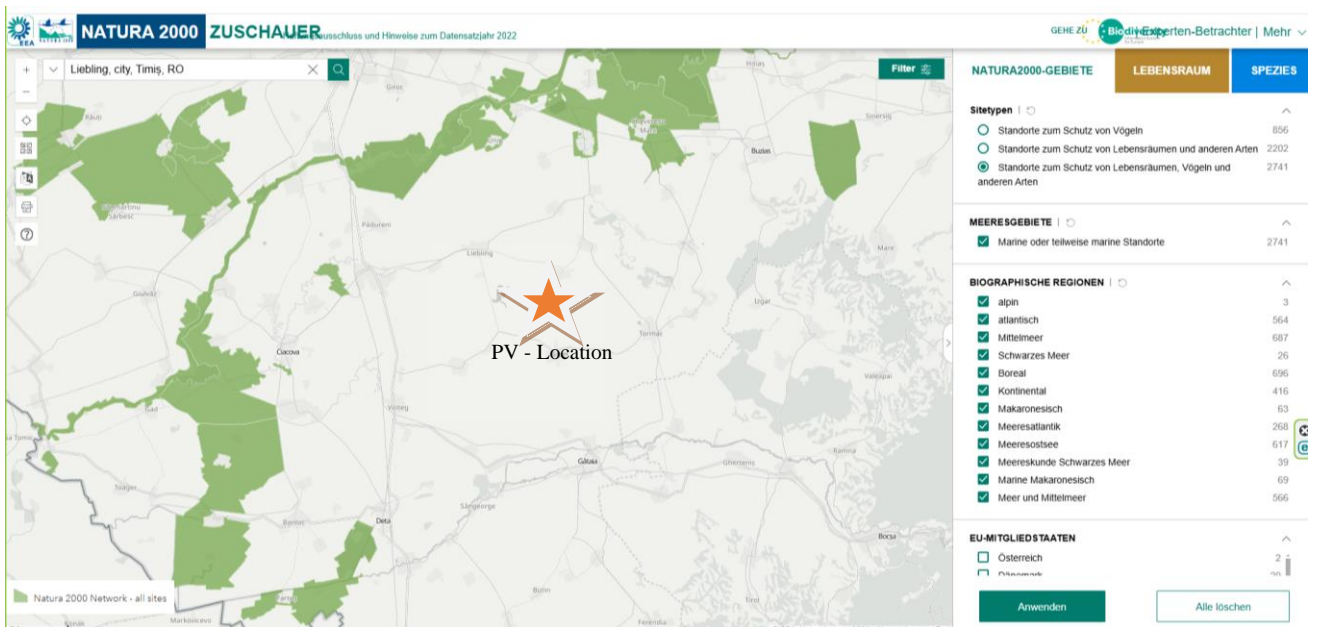
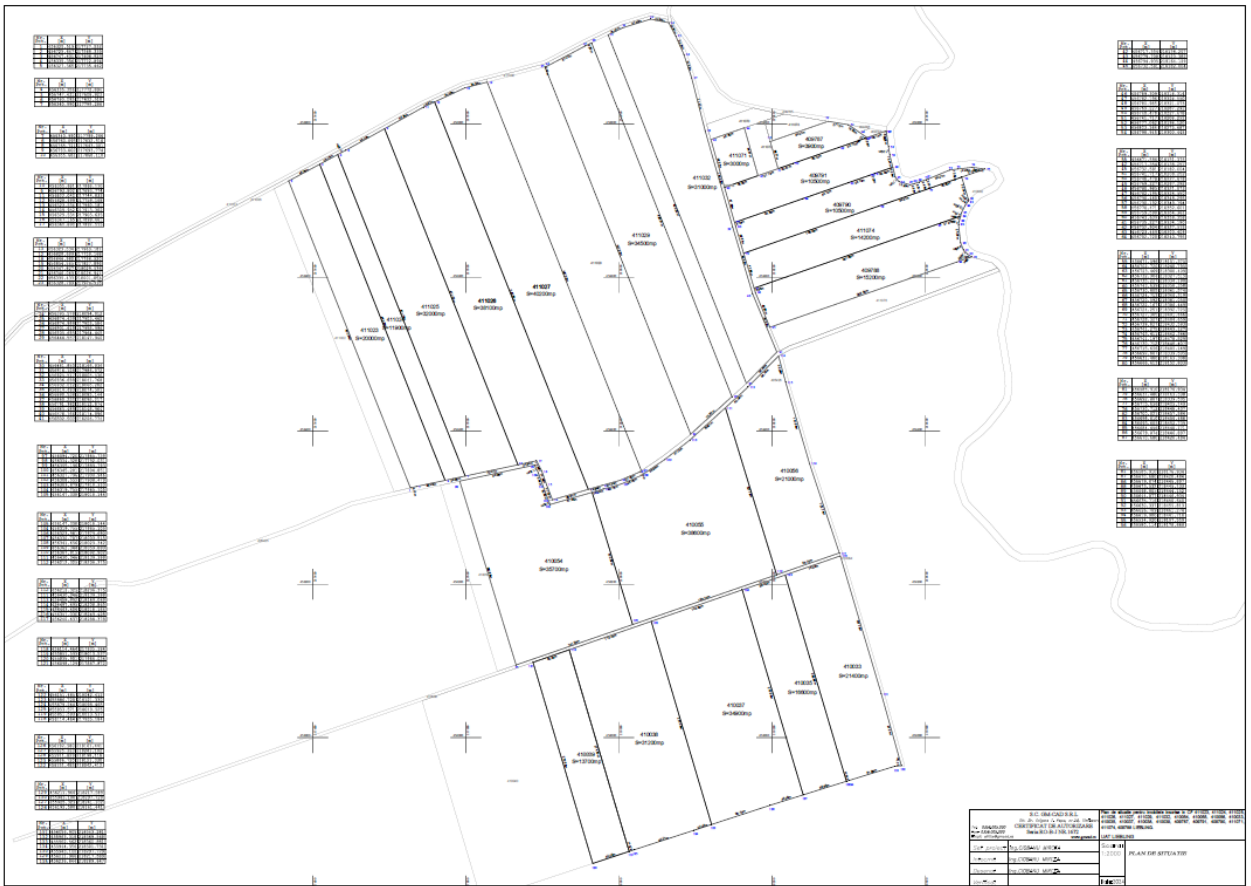
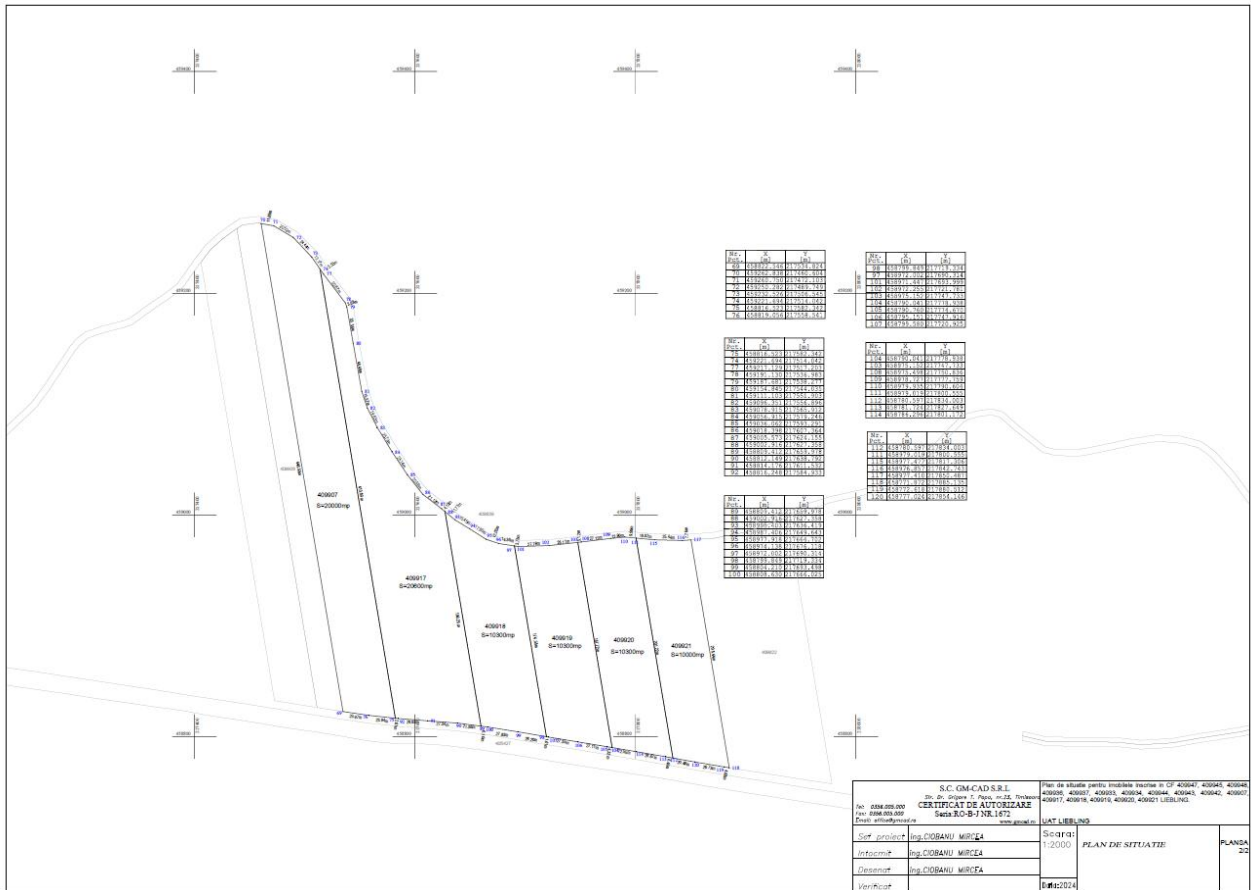


Photo 2: Overview Natura 2000



Photos 3: Cadastral plans

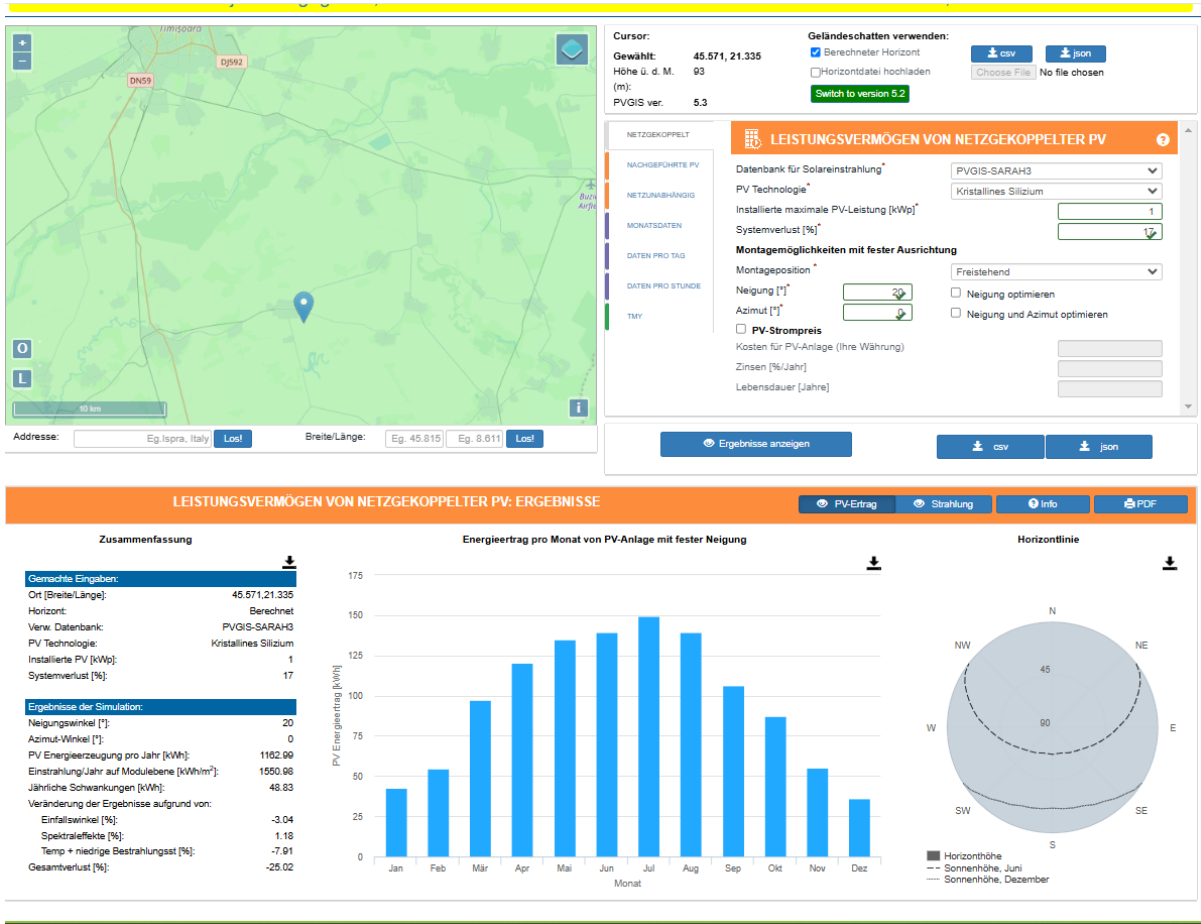


Photo 4: PVGIS Ertragsprognose pro kWp



Photo 5: Photo from north-west



Photo 6: Photo from north



Photo 6: Photo from north-east